

Kentucky Cancer Consortium

Cancer Survivorship Network

November 16, 2022

Meeting Purpose

- Share progress
- Provide input into KY Cancer Action Plan
- Identify opportunities to lead implementation strategies



Kentucky Comprehensive Cancer Control Program

CDC Grant

- Promote use of data and surveillance systems for planning, assessment, evaluation and decision-making
- Partner engagement and collaborations with population of focus and chronic disease, public health, and cancer coalitions
- Monitor progress of KY Cancer Action Plan implementation

Understand Cancer Survivors' Needs

Activities

Review data	<ul style="list-style-type: none">• KY Cancer Needs Assessment<ul style="list-style-type: none">• KCR data• KY BRFSS data• Other data sources	Relative survival Disparities Quality of Life Issues Risk factors
Listen to cancer survivors	<ul style="list-style-type: none">• 2020 State of Cancer Survivor Survey• COVID-19 Pandemic Survey of Kentucky Cancer Survivors and Caregivers• Digital Storytelling	National and KY cancer survivor concerns KY Cancer Survivor Stories
Understand partner perspectives	<ul style="list-style-type: none">• KCC Partner Conversations• KCP District Cancer Council Conversations• Patient Navigator Discussions	Partner input
Disseminate findings	<ul style="list-style-type: none">• Kentucky Cancer Survivorship Series	Provide information to KCC partners

Provide information to KCC Partners about cancer survivors' needs and meeting their needs

Partner Input

Community education is needed

Understand how the term “cancer survivor” is perceived

Implement survivorship care throughout the entire journey

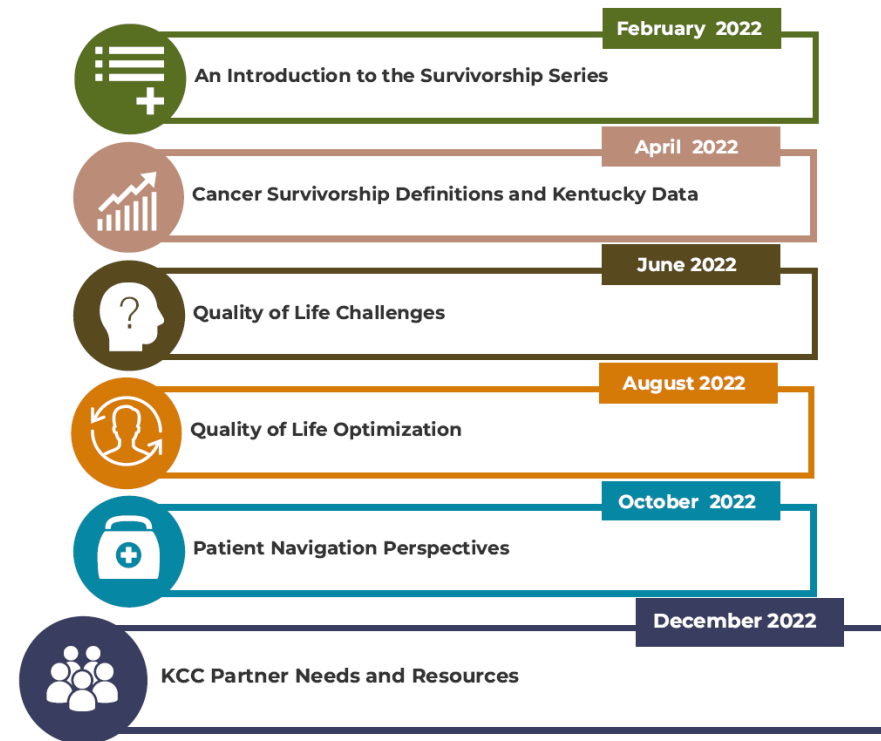
Physician support is essential

Prioritize quality of life

Promote survivorship guidelines and coordinated care

Optimize care with patient navigation

KCC Cancer Survivor Series





Comprehensive Connected Cancer Care (C4) Program

Principal Investigators:

Timothy Mullett, MD, MBA, FACS (Contact PI)

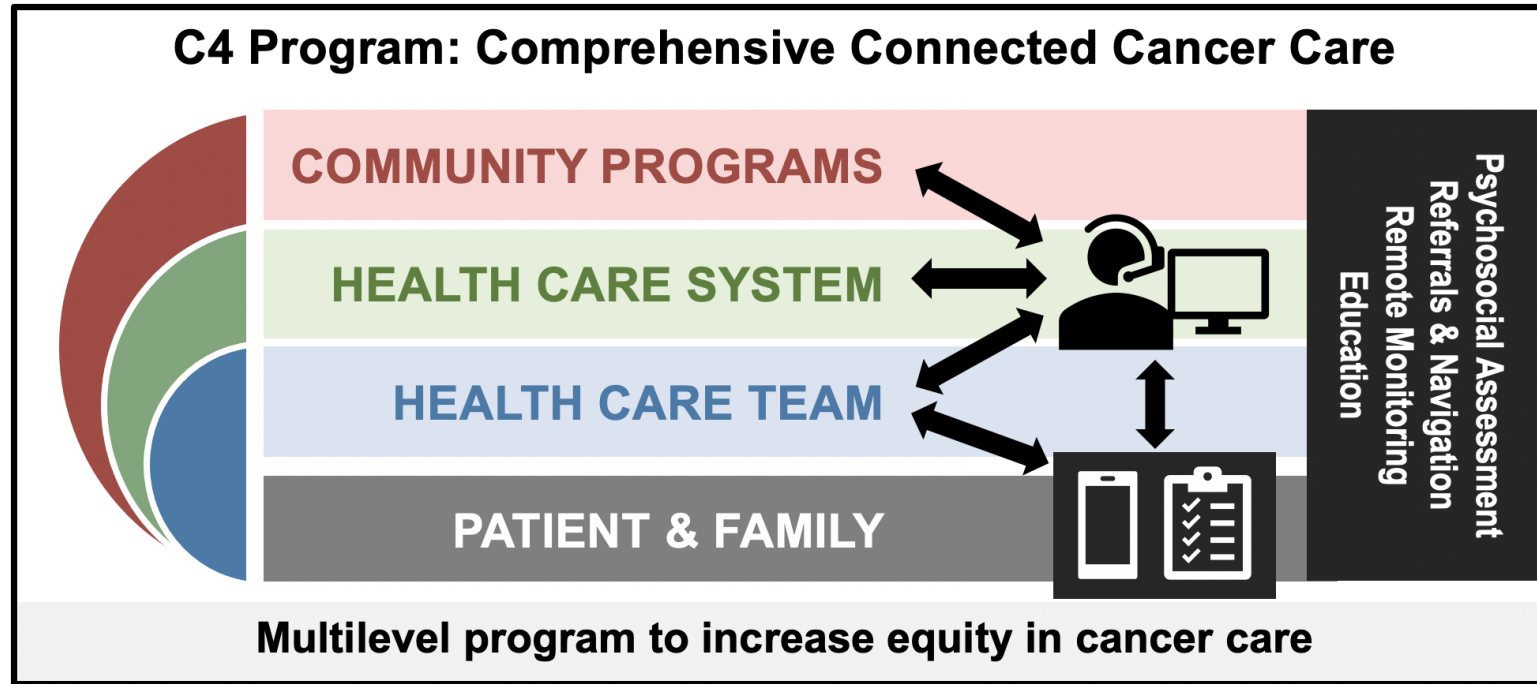
Pamela Hull, PhD

Ming-Yuan Chih, PhD, FAMIA

Funded by Merck Foundation: Alliance for Equity in Cancer Care



A Cancer Center Designated by the
National Cancer Institute



Overall Goal: to advance health equity for underserved populations by improving timely access to community-focused, patient-centered, high-quality cancer care

Meet CoC standards:

5.2 Psychosocial Distress Screening
8.1 Addressing Barriers to Care

Related CoC Standards (Supportive Care):

4.5 Palliative Care Services
4.6 Rehabilitation Care Services
4.7 Oncology Nutrition Services

Key Intervention Strategies: C4 Program

Navigation Dashboard

Monitor psychosocial assessments
Track automated referrals
Initiate manual referrals
Monitor open referrals
Follow up to close referral loops



Two-way Info Flow
Digital connectivity
assistance and/or
paper-based forms



Patient & Family

Mobile Application

Weekly psychosocial assessment
Personalized referrals & follow up
Report new needs as they arise
Report symptoms & side effects
Patient education & communication



Personalized Referrals

Social Determinants of Health:

Financial counselor
Transportation Assistance
Lodging Assistance
Financial and Legal Services
Personal Care Items
Caregiver support group

COMMUNITY PROGRAMS

Community Engagement

Multi-sector partners
Populate dashboard resource database
Network of programs
Engage policy/payors

Psychosocial Care:

Psychologist/Counselor
Chaplain/Pastoral care

HEALTH CARE SYSTEM

Policies, Staffing & Infrastructure

Workflow mapping
Continuous quality improvement
Learning community
Sustainability plan

Supportive Services:

Rehabilitation Care Nutrition
Palliative Care Hospice
Occupational Therapy

Cancer Care Team:

Receive alerts for specified triggers
Direct patient to site's patient portal
and/or phone number to
communicate with care team

HEALTH CARE TEAM

Education

Multi-disciplinary team-based care
Patient-centered communication
Implicit bias

Comprehensive Connected Cancer Care (C4) Program

Project Steering Committee

University of Kentucky Markey Cancer Center: Project Team

Project Director: Timothy Mullett, MD, MBA

Project Co-Directors: Pamela Hull, PhD
Ming Chih, PhD

Collaborators and consultants with expertise in:
Patient reported outcomes, human centered
design, data collection and analysis

Psych-Oncology Office Staff: psychosocial distress
assessment, patient navigation

Community Impact Office Staff: community partner
network, quality improvement, patient advocacy

UK MCC Network Staff: hospital partnerships,
provider education, CoC standards

Community Program Partners

American Cancer Society
ARH Chaplaincy Services
Kentucky Cancer Program (KCP)
Kentucky Cancer Consortium (KCC)

Patient Advocates

3 Survivors, 3 Caregivers

Clinical Collaborators

Hospitals:

UK Markey Cancer Center
Appalachian Regional Healthcare (ARH) at Hazard
King's Daughters Medical Center
St. Elizabeth Healthcare

Each Hospital:

Patient Navigator, Oncologist, Nurse

KCC: Statewide Organizations, Health
Systems, Policy Advocates, Payors

KCP: Pathfinder Resource Database and
Connections to Local Community Programs

**UK MCC Affiliate & Research Network
(MCCAN/MCCRN) Hospitals**

Listen to Cancer Survivors

Digital Storytelling Project

This digital story was created as part of the
Wellness Through Cancer Project

to raise awareness about the challenges facing Kentucky cancer survivors.

The project is a partnership between the Kentucky Cancer Consortium,
University of Kentucky Community & Leadership Development, and StoryCenter.



The Kentucky Cancer Consortium is supported by
the Centers for Disease Control and Prevention Cooperative Agreement number 5 NU58DP006313-05-00.

The contents of each story are those of the author and do not necessarily represent the official views of the partners or funder.

Kentucky Cancer Action Plan

Based on data and evidence-based interventions

Prioritize health equity

Focus on policy, system and environmental approaches

Include evaluation measures

User friendly

Clear Evidence Based Interventions

Communication EBIs
pair with Policy, System and
Environmental Changes

Policy	Educate on policy system and environmental approaches
	Educate decision makers about economic and insurance barriers related to health care for cancer survivors
Public	Educate the public that cancer is a chronic disease that people can and do survive
	Create a societal understanding of the growing cancer survivor population and issues surrounding cancer survivorship.
	Develop and disseminate public education programs that empower survivors to make informed decisions
Cancer Survivors & Caregivers	Provide information to cancer survivors, health care providers and the public about cancer survivorship and meeting their needs
	Educate survivors to their stage of survivorship during and immediately upon ending treatment
	Teach survivors how to access and evaluate available information

Clear Evidence Based Interventions

EBIs with Policy, System and Environmental Approaches

Policies

- Develop policies that establish an environment conducive to program implementation and support addressing cancer as a long-term, chronic disease.

Health System Changes

- Provide continuing education on cancer survivorship issues from diagnosis through long-term treatment effects and end-of-life care to support system level changes
- Establish and/or disseminate guidelines that support quality and timely referrals to internal and external services for cancer survivors and caregivers
- Integrate survivorship care in electronic health records
- Establish integrated multidisciplinary teams that include a focus on quality life
- Establish patient navigation programs that facilitate optimum care

Increase access to clinical trials for cancer survivors

Fund and support community coalitions to identify and coordinate quality of life services

Kentucky Cancer Consortium



Contact us:

Elaine.Russell@uky.edu

Director

Amanda.Beckett@uky.edu

Coalition Coordinator