



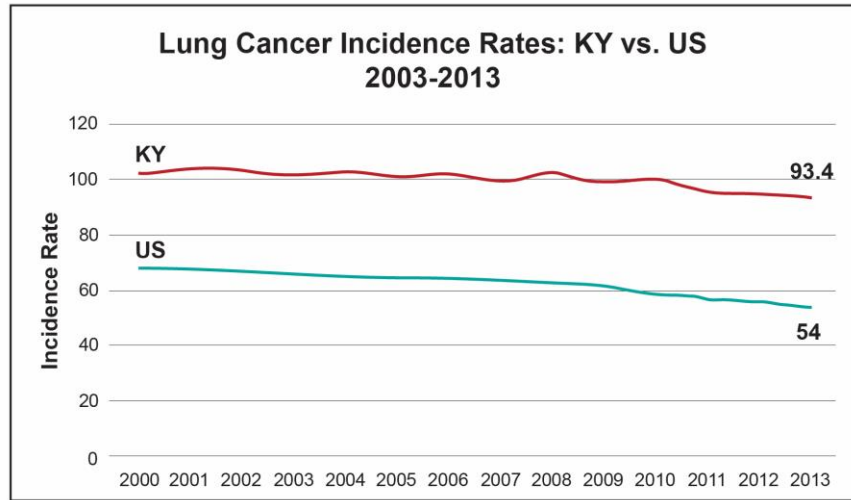
A KCC SNAPSHOT OF LUNG CANCER 2017

Lung cancer is the most common cause of cancer death (mortality) in men and women in Kentucky. Over 4,500 cases of lung cancer are diagnosed in Kentucky each year, with almost 80% of those cases diagnosed at a later stage. In 2013, 3,546 people died from lung cancer. Kentucky's death rate from lung cancer is 37% higher than the national rate.

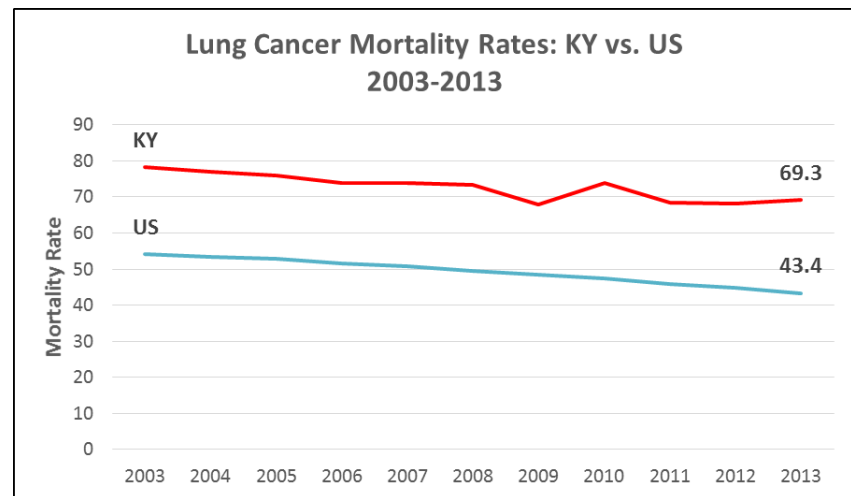
Many lung cancers can be prevented through not smoking or being exposed to second-hand smoke. Low dose CT scanning is a recent addition to detecting early stage lung cancer that can reduce the risk of death of lung cancer for those who are between ages 55-74 and have been heavy smokers. Over 21,000 people who died from lung cancer from 2003-2013 were Kentuckians aged 55-74.

When detected early, the 5-year survival rate for lung cancer is 55%. If discovered at a late stage, the rate is just 4%.

In recent years, buoyed by the emergence of a new lung cancer screening option for high-risk patients, representatives from over 20 Kentucky organizations formed the Lung Cancer Network. This group meets regularly to coordinate efforts and explore opportunities around lung cancer screening and early detection messaging. The network also acts as the Advisory Committee to the Prevention and Early Detection Component of the KY LEADS Collaborative.



Sources: Rates are per 100,000 and are age-adjusted to the 2000 US Std Population. US rate: SEER Cancer Statistics, <http://seer.cancer.gov/faststats/>. KY rate: Based on data released Jan 2016. Cancer-Rates.info. Accessed on May 31, 2016. Kentucky Cancer Registry. <http://cancer-rates.info/ky/>



Sources: Rates are per 100,000 and are age-adjusted to the 2000 US Std Population. US rate: SEER Cancer Statistics, <http://seer.cancer.gov/faststats/>. KY rate: Based on data released Jun 2016. Cancer-Rates.info. Accessed on February 28, 2017. Kentucky Cancer Registry. <http://cancer-rates.info/ky/>

Why is Kentucky leading the nation in lung cancer incidence and mortality?

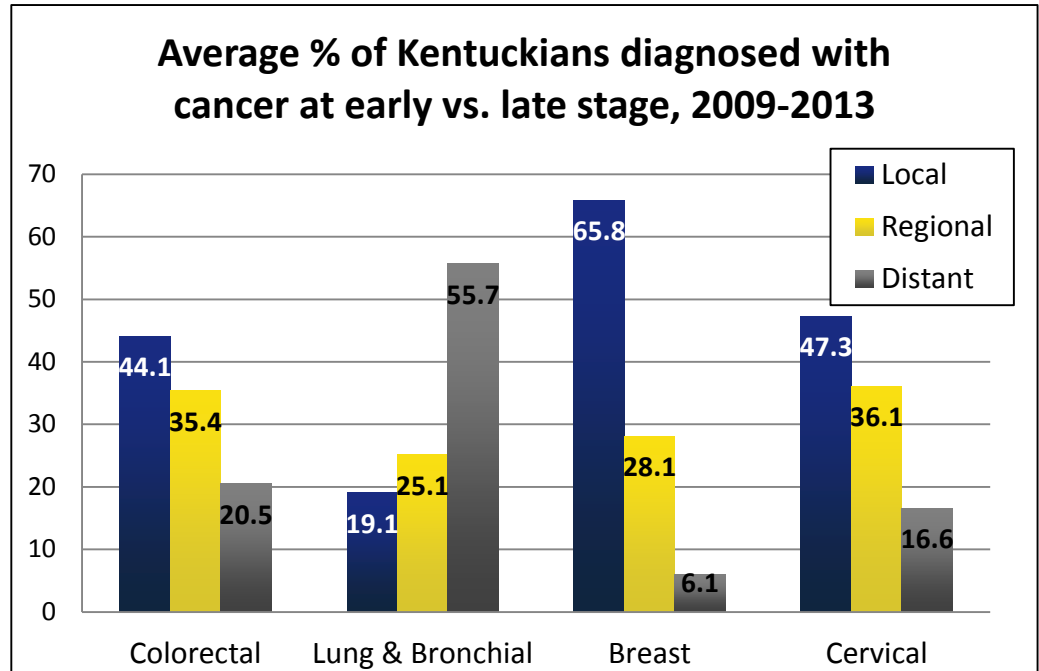
- Cigarette smoking is the number one risk factor for lung cancer, causing almost 90% of all lung cancers (HHS 2014 Surgeon General's report).
- Kentucky has the highest rate of smoking in the US: 26% of Kentuckians smoke vs. the national rate of 17.5%. The rate is worst among those who do not have a high school education. 45% of Kentuckians who have not finished high school smoke (2015 BRFSS).



A KCC SNAPSHOT OF LUNG CANCER 2017

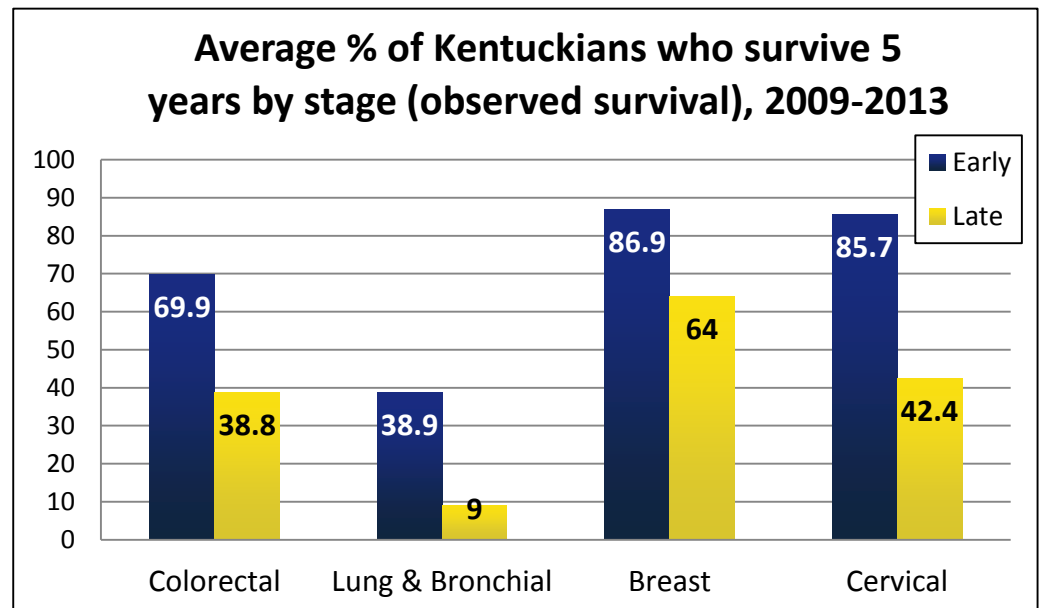
Lung cancer is significantly more likely to be diagnosed at a later stage than colon, breast or cervical cancers. The highest lung cancer death rates are found in the southeastern part of Kentucky, in the Kentucky River, Big Sandy and Cumberland Valley Area Development Districts.

Source: Kentucky Cancer Registry



Source: Kentucky Cancer Registry. Cancer Incidence Rates.; 2013. Available at: www.kcr.uky.edu.

Kentuckians who are diagnosed at an early stage of cancer were more likely to survive 5 years than Kentuckians who are diagnosed at a late stage. Lung cancer had the greatest difference between 5 year survival at early stage vs. late stage (45.6% vs. 9.8%).



Source: Kentucky Cancer Registry. Cancer Survival Rates, 2013.

Kentucky Cancer Action Plan: How does it address lung cancer prevention and early detection?

The Kentucky Cancer Action Plan (CAP) is the state's cancer control plan, used as a "blueprint for action" in addressing four key areas of the cancer continuum: prevention, early detection, treatment and care, and quality of life. Each section contains major goals, objectives, and suggested strategies. Lung cancer is addressed throughout the prevention and early detection sections, with over 20 objectives pertaining to: prevention of tobacco initiation, smoke-free environments and reduction of secondhand smoke exposure, radon detection and mitigation, environmental carcinogens, and lung cancer screening. Visit www.kycancerc.org to find out how you can get involved!